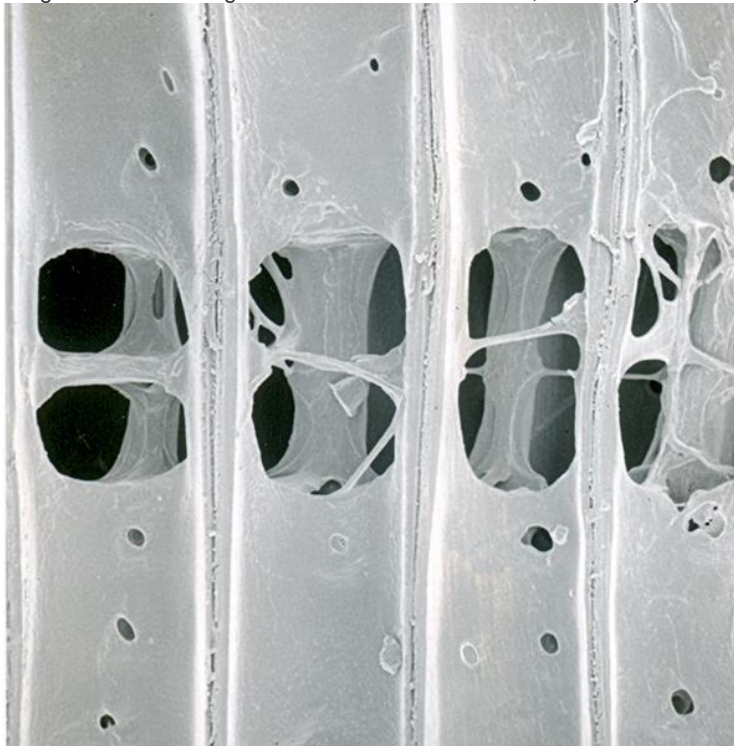


December 2014

COVER

Analyses of the *Phlebiopsis gigantea* genome reveal enzyme systems involved in the degradation of conifers.

Image Credit: Joel Jurgens and Robert A. Blanchette, University of Minnesota



The wood decay fungus *Phlebiopsis gigantea* rapidly colonizes conifer wood by metabolizing complex resins as well as the major cell wall polymers cellulose, hemicellulose and lignin. The radial section of pine wood shows extensive erosion of cell walls during hyphal invasion of the ray parenchyma cells and tracheids. See [Hori et al.](#) in this issue.